

Question Paper

Exam Date & Time: 21-Mar-2025 (10:00 AM - 01:00 PM)



MANIPAL ACADEMY OF HIGHER EDUCATION

THIRD PROFESSIONAL YEAR MBBS PART I DEGREE EXAMINATION - MARCH 2025

SUBJECT : OPHTHALMOLOGY

(CBME SCHEME - 2019/2020 BATCHES - REPEATERS)

Marks: 100

Duration: 180 mins.

Answer all the questions.

Section Duration: 20 mins

Answer all the questions.

Illustrate with neat, labelled diagrams wherever appropriate.

1. A 35year old man presented with a corneal opacity in one eye which had developed after a trauma with a wooden stick 10 years back.

- | | | |
|-----|---|-----|
| 1A) | What are the different grades of corneal opacities? | (1) |
| 1B) | Mention any two causes for a corneal opacity other than trauma. | (2) |
| 1C) | Briefly describe the factors responsible for maintaining corneal transparency. | (3) |
| 1D) | Classify the types of Keratoplasty and give any one indication for each type of keratoplasty. | (4) |

- | | | |
|-----|---|-----|
| 2A) | Describe the anatomical classification of uveitis. | (2) |
| 2B) | What are the characteristic clinical features of acute iridocyclitis? | (4) |
| 2C) | Outline the treatment for acute iridocyclitis. | (4) |

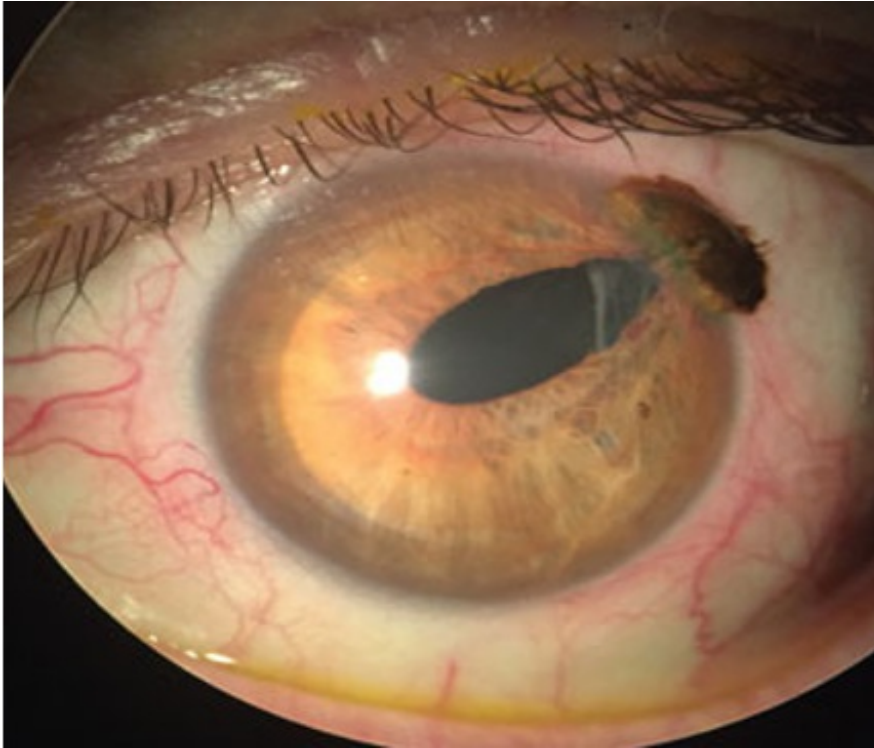
3. Write briefly on the following:

- | | | |
|-----|--|-----|
| 3A) | A 15year old boy came to the OPD for change of his glasses. He was found to be using glasses of power -2.00 Diopter Cylinder at axis 180° in both the eyes.
i) What is this refractive error?
ii) Mention any two causes of this refractive error.
iii) Enumerate the surgical treatment options available for correction of this condition.
(1+1+2 = 4 marks) | (4) |
| 3B) | Define presbyopia. Discuss its symptoms and management.
(1+1+2 = 4 marks) | (4) |
| 3C) | Mention the tests for colour vision. Enumerate the types of colour vision defects.
(2+2 = 4 marks) | (4) |
| 3D) | Describe evaluation of chronic dacryocystitis in an adult and mention the treatment options.
(2+2 = 4 marks) | (4) |

- 3E) A patient presented to the emergency department with multiple facial fractures following a road traffic accident. What are the clinical features that would make you suspect an orbital floor fracture? (4)
- 3F) What is a chalazion? Describe the clinical features and management of a chalazion. (4)
(1+1+2 = 4 marks)
- 3G) Three days after cataract surgery, a diabetic patient complains of severe pain, redness and diminution of vision to only perception of light in the operated eye. The clinical picture is as shown. (4)



- i) What is the provisional diagnosis?
ii) Write briefly about the management of such a case.
(1+3 = 4 marks)
- 3H) Write a brief note on Intra ocular lenses. (4)
- 3I) What is Retinal detachment? Describe the clinical features of a rhegmatogenous retinal detachment. (4)
(1+3 = 4 marks)
- 3J) With a suitable diagram describe the pathology of a bitemporal hemianopic visual field defect. Write any two intracranial lesions that can present with such a field defect. (4)
(3+1 = 4 marks)
- 3K) A 40 year old lady presented with sudden onset diplopia and deviation of her left eye. What are the differentiating features between a paralytic and a non-paralytic squint? (4)
- 3L) Define communication with respect to a patient and a doctor? Enumerate the different components of Communications and explain various types of medical communication? (4)
- 3M) A 45year old man suffered a corneal tear in one eye following an injury with a nail. (4)



- i) What is the complication shown in the picture?
- ii) What type of globe injury is this classified as?
- iii) Name any four complications that the patient can develop.
(1+1+2 = 4 marks)

3N) Write a brief note on Vitamin A deficiency and prophylaxis. (4)
(2+2 = 4 marks)

3O) A chronic diabetic on routine ocular evaluation is detected to have a proliferative diabetic retinopathy in both his eyes. (4)
i) What are the retinal signs that will be seen in such a case?
ii) Name any two complications that the patient may develop if left untreated.
(2+2 = 4 marks)

-----End-----