

MANIPAL UNIVERSITY

SECOND SEMESTER B. ARCH. DEGREE EXAMINATION – MAY 2016

SUBJECT: PRINCIPLES OF LANDSCAPE DESIGN (ARC-14-112/ARC 112)
(2014 SCHEME)

Friday, May 27, 2016

Time: 10:00 – 13:00 Hrs.

Max. Marks: 50

- ✗ Answer any FIVE questions.
- ✗ Question 1 is Compulsory. Answer any FOUR from the remaining.
- ✗ Support your answers with sketches wherever necessary.

1. Prepare a landscape design for the proposed space between two office buildings given below.
(Ref.Fig-1). Explain it through:

- 1A. Layout plan
- 1B. Grading plan
- 1C. Sections
- 1D. Views

(3+2+3+2 = 10 marks)

2. Explain the following:

- 2A. Use of shrubs in the landscape area
- 2B. Harmony in design

(5+5 = 10 marks)

3. Explain briefly:

- 3A. What do you mean by the term site inventory?
- 3B. Role of Plant material on outdoor spaces.

(5+5 = 10 marks)

4. What do you mean by contour lines? Explain two different types of landform through contour lines (plans and sections required).

(10 marks)

5. Write short notes on:

- 5A. Grey water recycling
- 5B. Importance of water bodies in landscape areas

(5+5 = 10 marks)

6. Write short notes:

- 6A. Sustainable design
- 6B. Spanish landscape and Chinese landscape

(5+5 = 10 marks)

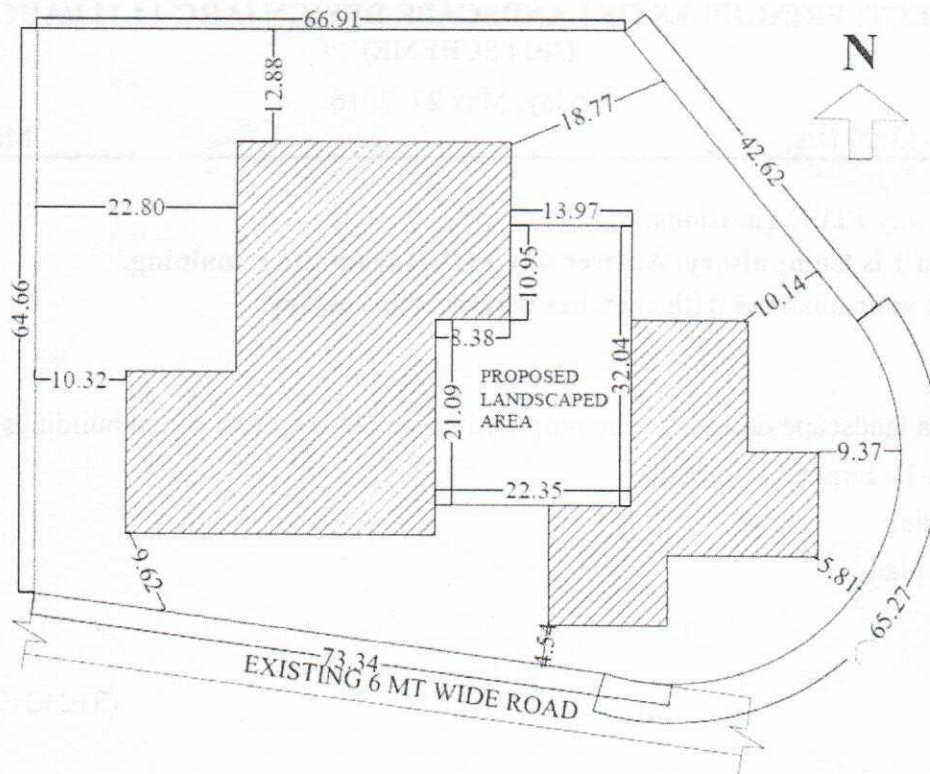


FIG-1

