

## MANIPAL UNIVERSITY

THIRD SEMESTER B. DES. (FD) DEGREE EXAMINATION – FEBRUARY 2016

SUBJECT: BFD 201 – HISTORY OF ART, DESIGN AND FASHION II  
(2013 AND 2014 SCHEME)

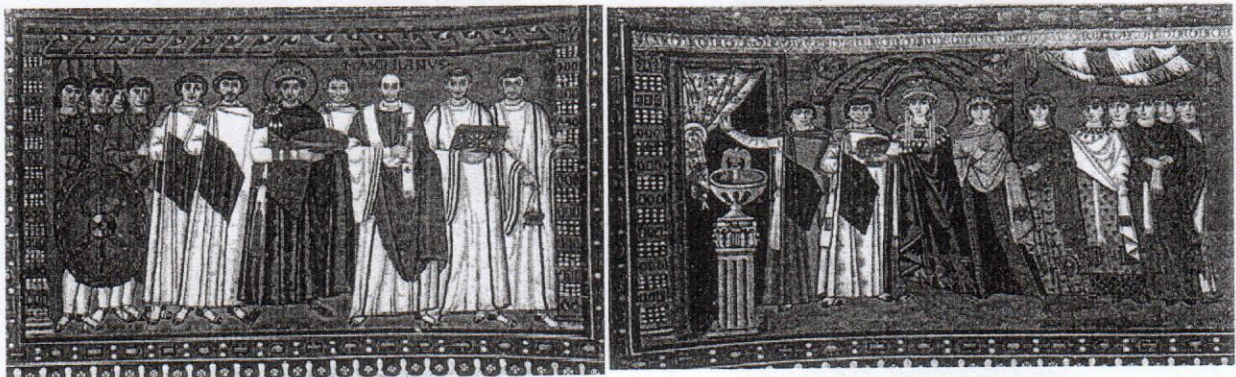
Tuesday, February 16, 2016

Time: 10:00 – 13:00 Hrs.

Max. Marks: 50

- ✍ Answer any FIVE complete questions.  
✍ Illustrate wherever necessary.

1. Study the figure given below and answer the questions that follows:



- 1A. Explain the costume components of men.  
1B. Explain the costume components of women.  
1C. Infer the painting as a piece of art work.

(4+4+2 = 10 marks)

2. Explain the following of early and late middle ages:

- 2A. Pour point  
2B. Cotahardie  
2C. Dress of priest of 9<sup>th</sup> century  
2D. Head dress of women of 12<sup>th</sup> century

(3+2+3+2 = 10 marks)

- 3A. Explain the costume components of the men and women of 16<sup>th</sup> century.  
3B. Explain the costume components of men and women from 1400 – 1450.

(5+5 = 10 marks)

4. Explain the following:

- 4A. Stomacher  
4B. Pecadil  
4C. Peascod belly  
4D. Culots  
4E. Bases  
4F. Hourglass silhouette of 1530  
4G. Ropa  
4H. Duckbill shoes  
4I. Conch  
4J. Supportase

(1 mark × 10 = 10 marks)

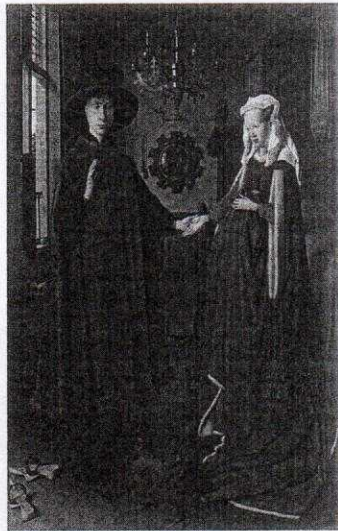


- 5A. Explain any 5 prominent men's costume of 17<sup>th</sup> century.  
 5B. Explain any 5 prominent women's costume of 18<sup>th</sup> century.

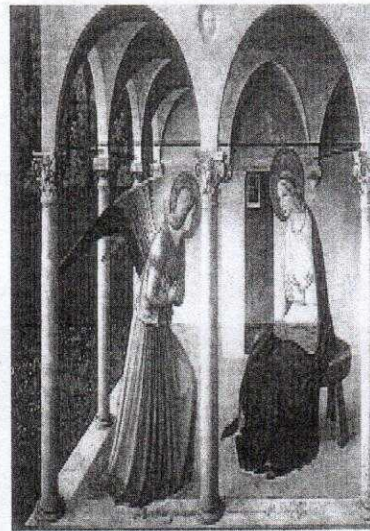
(5+5 = 10 marks)

6. Explain the following:

6A



6B



6C



6D



6E



(2 mark × 5 = 10 marks)

