

MANIPAL UNIVERSITY

EIGHTH SEMESTER B. ARCH. DEGREE EXAMINATION – MAY 2017

SUBJECT: ELECTIVE II – ADVANCED URBAN DESIGN (ARC-408.1)

Wednesday, May 10, 2017

Time: 10:00-13:00 Hrs.

Max. Marks: 50

- ✍ Attempt any FIVE questions.
- ✍ The answers should be supported by sketches wherever necessary.
- ✍ Assume suitable data wherever necessary.

1. Review the following plan and section of the street and explain the features and their significance and the design criteria.

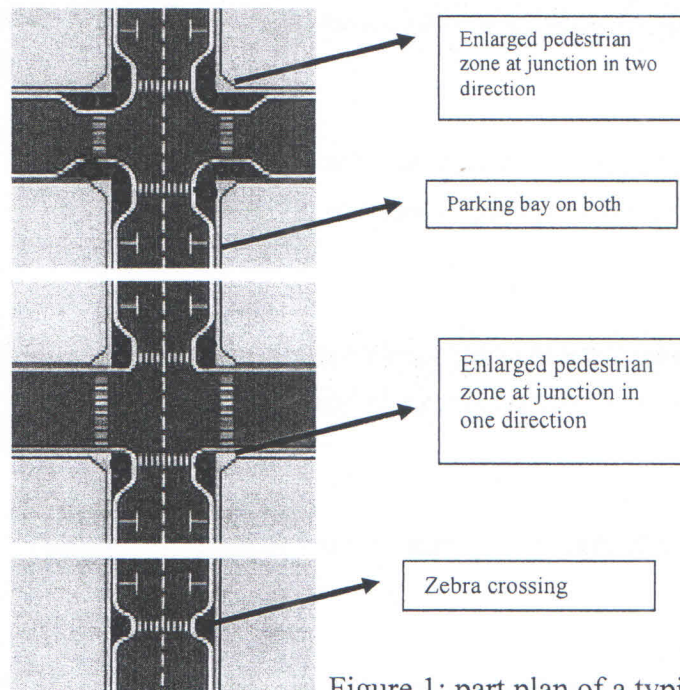


Figure 1: part plan of a typical street in a city

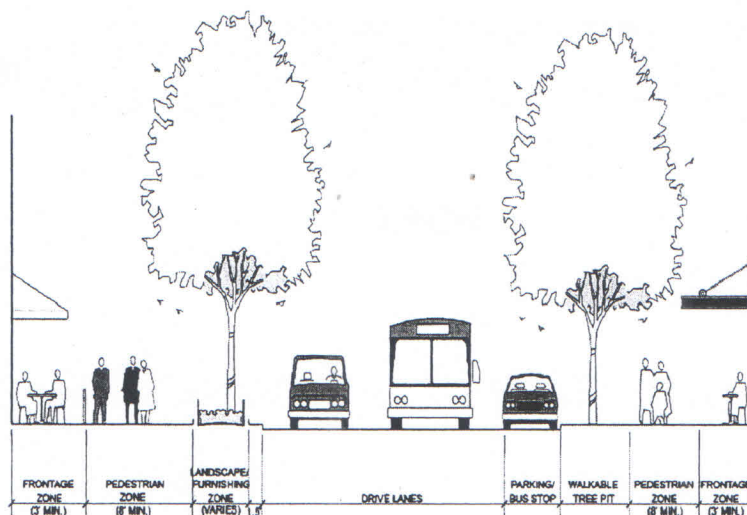


Figure 2: section across typical street

- 2A. What is a space genotype?
- 2B. Derive space genotype for the following two plans in Fig 3.
Give similarities and differences based on the analysis.

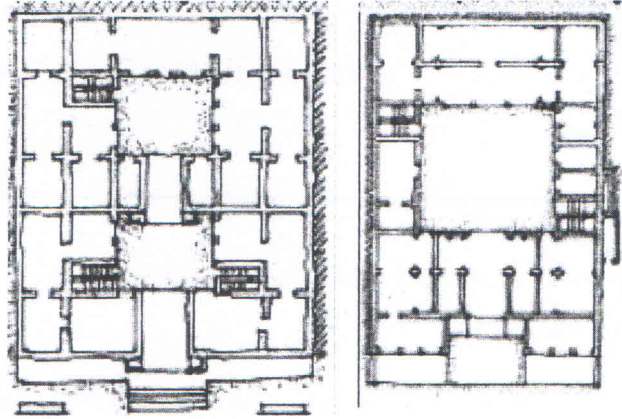


Figure 3: two plans of havelis in Jaipur

- 2C. Give any ten points to be considered in urban form development w.r.t. energy efficiency.
(1+5+4 = 10 marks)
- 3A. Sketch and label a vertical green habitat as an idea of a building form.
- 3B. Explain in brief classification of Urban Perception given by Appleyard.
(7+3 = 10 marks)
- 4A. Explain regenerative design and the trajectory of environmentally responsible design.
- 4B. Explain smart transportation system features in brief.
(5+5 = 10 marks)
5. What are the types of study that comes under environmental psychology?
(10 marks)
- 6A. Explain any eight techniques with sketches how landscape should be designed in urban space to benefit the environment.
- 6B. Name any four roles of trees in urban space in a diagram.
(8+2 = 10 marks)

