

MANIPAL UNIVERSITY

EIGHTH SEMESTER B. ARCH. DEGREE EXAMINATION – MAY 2017

SUBJECT: ELECTIVE II – TRADITIONAL ARCHITECTURE (ARC-408.4)

Wednesday, May 10, 2017

Time: 10:00 – 13:00 Hrs.

Max. Marks: 50

✍ Answer any FIVE FULL questions.

✍ Give neat sketches wherever relevant. Assume any missing data appropriately.

1A. What is meant by “*manushyapramana*”? How does it achieve standardization and allow for variation at the same time?

1B. Explain the “*veethi*” system of planning.

(5+5 = 10 marks)

2A. What is the basis of classifying certain perimeters as auspicious and not-so-auspicious in *vastuvidya*? What is its relevance in construction?

2B. How did prescription of dimensions and planning regulations in ‘*Vastuvidya*’ support prefabrication? Explain with example.

2C. Explain different types of “*shalas*” and their significance in planning for incremental addition.

(4+3+3 = 10 marks)

3. Explain the step-by step procedure of arriving at plan layout for a ‘*Eka shala*’ starting from positioning it in a given plot.

(10 marks)

4. With the support of an example from any region in India, explain how traditionally evolved built-forms addressed the issues of climate, material and technological appropriateness in design.

(10 marks)

5. Explain the following with sketches:

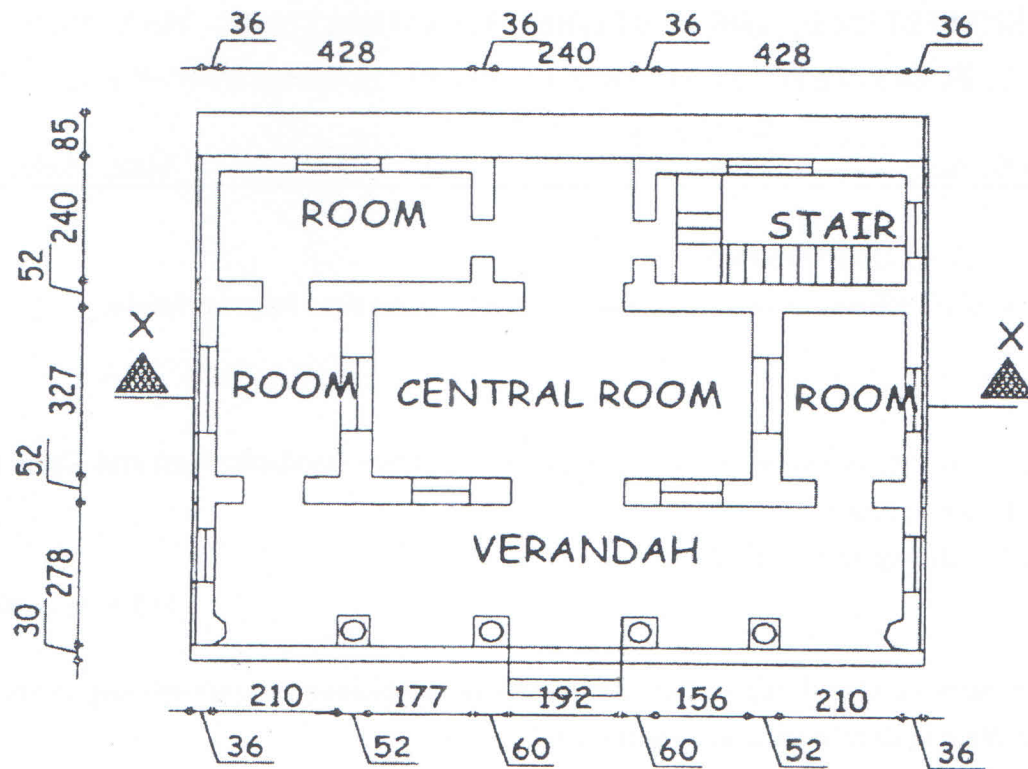
i) Traditional gateways ii) *Gamana* iii) *Kootam* and its use iv) *vastumandala*

(2½ marks × 4 = 10 marks)

6A. What are the prescriptions of ‘*yonis*’ system of orientation?

6B. Check the building plan given below for its possible orientation as per *yonis* system of orientation. Compare orientation for the overall building plan as well as for a room by the side of central room. Given measurements are in cm (Take 1 *pada* = 24 cm)

(4+6 = 10 marks)



PLAN

