

MANIPAL ACADEMY OF HIGHER EDUCATION
SECOND SEMESTER B. DES. (ID)/B.A. (ID) DEGREE EXAMINATION – APRIL 2018
SUBJECT: BID 104 – GRAPHICS FOR INTERIORS – 3 DIMENSION

Monday, April 23, 2018

Time: 10:00 – 13:00 Hrs.

Max. Marks: 50

- ✍ **Question no-1 is compulsory.**
✍ **Answer any THREE from remaining four questions.**

1. Draw one point perspective view of Kitchen. As shown in the fig (q1)
P.P to observer is 11cm, ground line to horizon line is eyelevel i.e 4.5cm. Draw the view.
SCALE 1:20.
(Do not erase the construction lines, Assume suitable data).

(20 marks)
2. A hexagonal prism of side 25 mm and height 65 mm is lying on its base on HP with one of its rectangular faces parallel and 15mm in front of it. It is cut by a section plane perpendicular to HP and inclined to VP. Draw the sectional view.

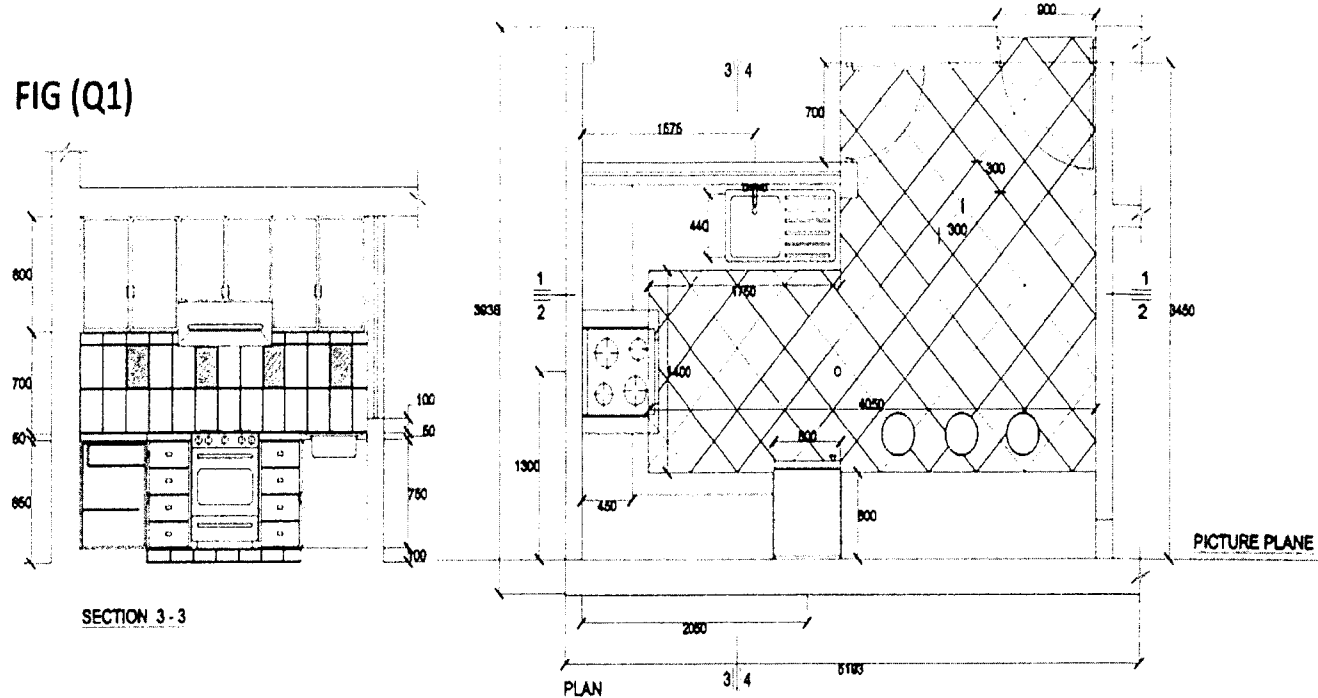
(2+2+2+4 = 10 marks)
3. Draw the development of the cube of 30mm.

(3+3+4 = 10 marks)
4. Draft the plan, section, 2 elevations and view of the Table from the given Fig (Q4)

(2+2+2+4 = 10 marks)
5. A hexagonal prism, edge of base 20 mm and 50 mm long, rests with its base on H.P such that one of its rectangular faces is parallel to V.P. It is cut by a plane perpendicular to V.P, inclined at 45 degrees to H.P and passing through the right corner of the top face of the prism. Draw the sectional top view and develop the lateral surface of the truncated prism.

(2+2+2+4 = 10 marks)

FIG (Q1)



SECTION 1-1

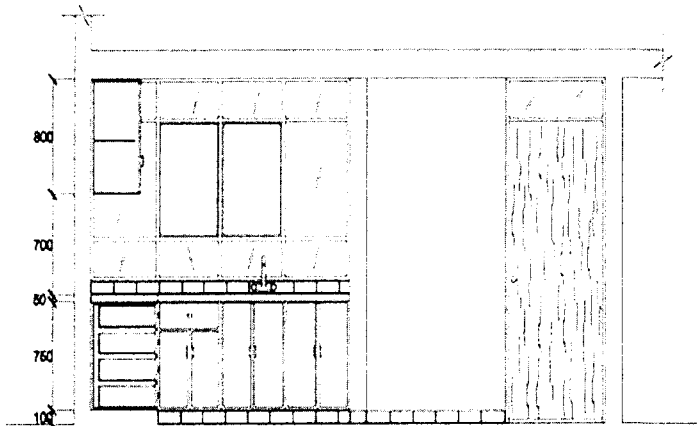
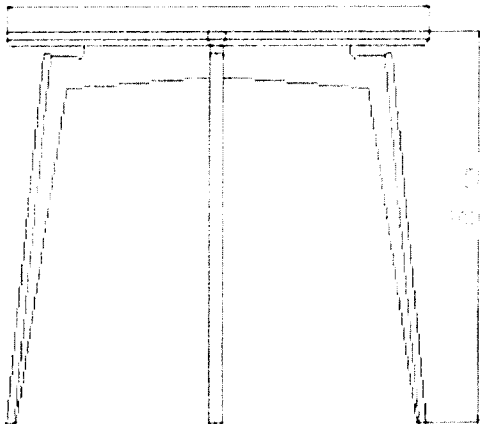
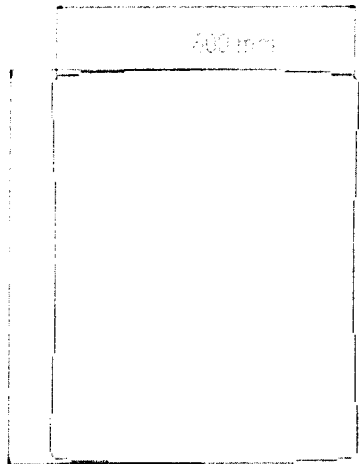


FIG (Q4)

W 600 X D 650 X H 850 MM

TOP

RIGHT



Section

