

**MANIPAL ACADEMY OF HIGHER EDUCATION****SECOND/FOURTH SEMESTER B. ARCH. DEGREE EXAMINATION – JULY 2018****SUBJECT: PRINCIPLES OF LANDSCAPE DESIGN (ARC-14-112)/  
LANDSCAPE ARCHITECTURE (ARC 216)  
(2014/2010 SCHEME)**

Friday, July 13, 2018

Time: 10:00 – 13:00 Hrs.

Max. Marks: 50

- ✍ Answer any FIVE questions.
- ✍ Question no 1 is compulsory. Answer any FOUR from the remaining.
- ✍ Support your answers with sketches wherever necessary.

1. Prepare a landscape design for architect's office of site given below. (Ref. Fig-1)  
Explain it through layout plan, grading plan, sections, views.

(3+2+3+2 = 10 marks)

2. Explain the following:

- 2A. The advantages of using water body in the landscape area  
2B. Hierarchy in design

(5+5 = 10 marks)

3. Write short notes on:

- 3A. Environmental benefits of landscape in built environment  
3B. Site grading

(5+5 = 10 marks)

4. Different techniques of outdoor lighting for landscape design

(10 marks)

5. Explain briefly:

- 5A. Merits of Bio-Swales in landscaped area  
5B. Site Planning for landscape design

(5+5 = 10 marks)

6. Write short notes on:

- 6A. Soil management techniques  
6B. Differentiate between Japanese gardens and Mughal gardens.

(5+5 = 10 marks)

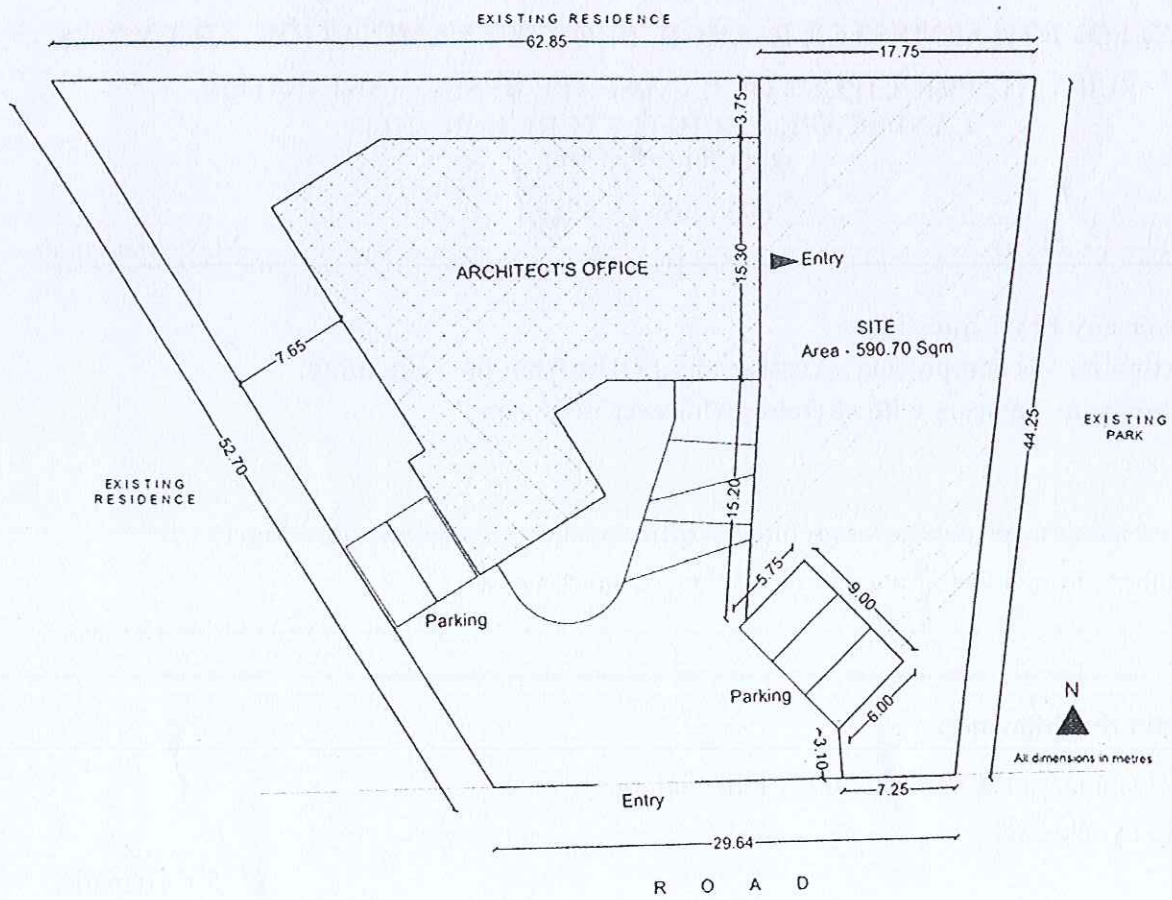


Fig-1

