



DEPARTMENT OF DESIGN, FOA

MANIPAL UNIVERSITY, MANIPAL

VII SEMESTER B. Des (ID) EXAMINATION NOV 2018
SUBJECT: ELECTIVE II – HOSPITALITY INTERIOR (BID 403)

Time: 18 Hrs.

Max. Marks: 50

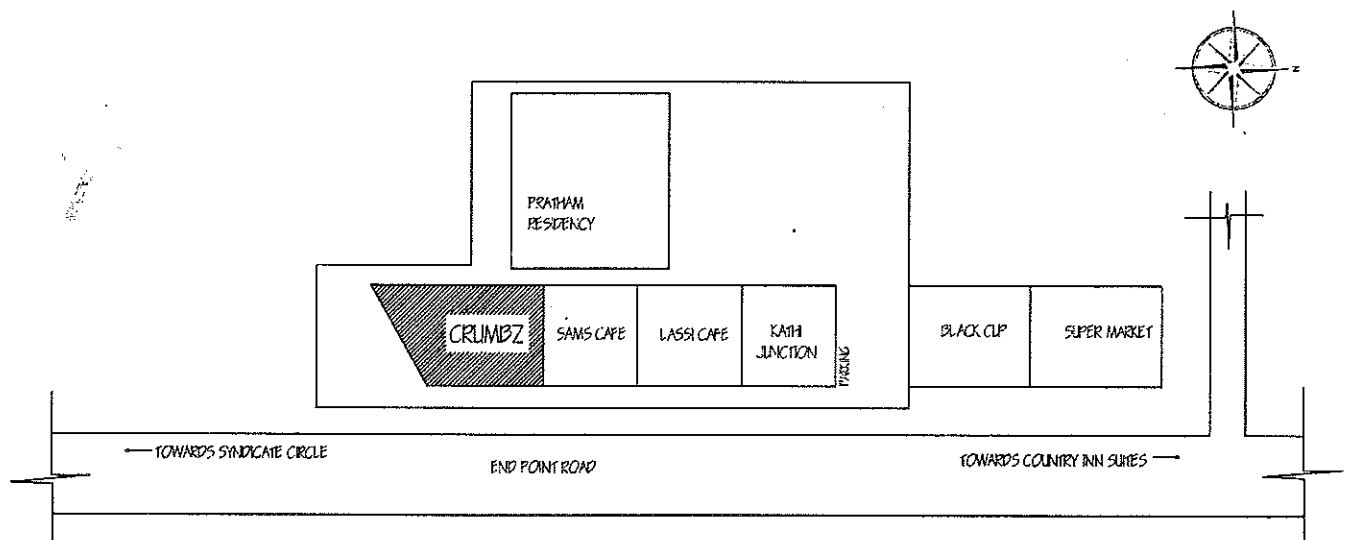
INSTRUCTION TO CANDIDATES

- The examination is for 6 Hours daily and will be there for 3 days. Students have to submit their concept sheets at the end of day 1 and there will not be any break on day 1.
- No sheets will be allowed to be taken out of or into the examination hall.
- Non - messy snacks are permitted to be taken by students during examination.
- Answers shall be drawn and written on drawing sheets only
- The medium of presentation, - i.e. Pencil, Crayon, Ink. Etc. is left to the choice of the candidate.

DESIGNING INTERIORS FOR A COFFEE SHOP

Crumbs have approached ID students to redesign their café at End point road, Manipal. Design the space that's inviting, student friendly, comfortable and attractive, yet practical and functional.

LOCATION CONTEXT



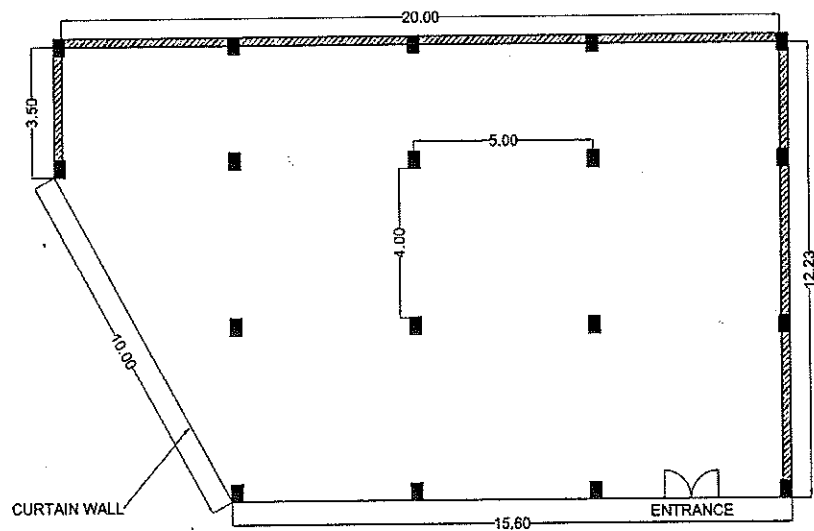
PLAN



COLUMN SIZE 300 x 450 MM
WALL THICKNESS 230 MM
OVERALL HEIGHT 3.5 M
BEAM BOTTOM AT 3.0 M

NOTE:

ASSUME SUITABLE DATA
WHEREVER NECESSARY
ALL DIMENSIONS IN METERS



ROAD

MINIMUM REQUIREMENTS FOR DESIGNING

Cash counter

Pantry Desk & Storage

Seating area

Washroom

Specify if any other space is essential

DELIVERABLES

Note: Assume suitable data for Menu, Capacity, furniture and material specification (wherever necessary). Sketches should be neat and proportionate.

DAY 1 - Design Program

(5 marks)

- Identify user and activities
- Spaces with areas and furniture Layout (Sketches)
- Diagram showing connectivity of spaces
- Design consideration for each activity/spaces

DAY 1 - Concept Development

(10 Marks)

- Statement of concept/ theme (related to function, form, technologies, Materials, environment, aesthetics, philosophy, details, character, heritage, Culture, local influences, etc.)
- Sketches showing initial designs based on the concept

DAY 2 & 3 -

Design Scheme

(35 marks)

- Floor Plan (10 marks)
(The floor plan must be provided with rendered furniture, clearance and its dimension in proportion)
- Sectional Elevations (10 marks)
(2 major sectional elevations defining your concept with all specifications - dimensions, colors, finishes, materials etc. must be provided in proportion)
- Any one View covering majority of the interiors including flooring and ceiling details (5 marks)
- Proportionate Façade elevation with detailing. (5 Marks)
- Sketch (Rendered) any one furniture as per your design with its material specifications And Joinery details. (5 Marks)

MINIMUM REQUIREMENTS FOR DESIGNING

Cash counter

Pantry Desk & Storage

Seating area

Washroom

Specify if any other space is essential

DELIVERABLES

Note: Assume suitable data for Menu, Capacity, furniture and material specification (wherever necessary).
Sketches should be neat and proportionate.

DAY 1 - Design Program

(5 marks)

- Identify user and activities
- Spaces with areas and furniture Layout (Sketches)
- Diagram showing connectivity of spaces
- Design consideration for each activity/spaces

DAY 1 - Concept Development

(10 Marks)

- Statement of concept/ theme (related to function, form, technologies, Materials, environment, aesthetics, philosophy, details, character, heritage, Culture, local influences, etc.)
- Sketches showing initial designs based on the concept

DAY 2 & 3 - Design Scheme

(35 marks)

- Floor Plan (10 marks)
(The floor plan must be provided with rendered furniture, clearance and its dimension in proportion)
- Sectional Elevations (10 marks)
(2 major sectional elevations defining your concept with all specifications - dimensions, colors, finishes, materials etc. must be provided in proportion)
- Any one View covering majority of the interiors including flooring and ceiling details (5 marks)
- Proportionate Façade elevation with detailing. (5 Marks)
- Sketch (Rendered) any one furniture as per your design with its material specifications And Joinery details. (5 Marks)