

Reg. No.									
----------	--	--	--	--	--	--	--	--	--

MANIPAL ACADEMY OF HIGHER EDUCATION

FIFTH SEMESTER B. DES. (ID) DEGREE EXAMINATION – NOVEMBER 2019

**SUBJECT: BID 301 – INTERIOR DESIGN – INSTITUTIONAL DESIGN
(2015 SCHEME)**

Tuesday, November 26, Wednesday, November 27 and Thursday, November 28, 2019
(Tuesday 10:00 – 16:00; Wednesday 10:00 – 13:00 & 14:00 – 17:00 and Thursday 10:00 – 13:00 & 14:00 – 17:00)

Time: 18 Hrs. (in three days)

Max. Marks: 50

INSTRUCTIONS TO CANDIDATES:

- ✍ The first setting of 6 hours is continuous, at the end of which the candidate shall submit drawings as indicated. The submission will not be returned to the candidates, so they are advised to keep a copy/note of the first day's submission.
- ✍ The second & third day of examination is conducted in two sittings of six hours duration (3+3=6) hours.
- ✍ Major deviations from the design developed and submitted in the first day's work will not be accepted.
- ✍ No sheets will be allowed to be taken out of or into the examination hall.
- ✍ Non- messy snacks are permitted to be taken by students during examination.
- ✍ Answers shall be drawn and written on drawing sheets only.
- ✍ The medium of presentation – i.e. pencil, crayon, ink, etc. is left to the choice of the candidate.
- ✍ Assume suitable data for furniture and material specifications (Wherever necessary).
- ✍ Sketches should be neat and proportionate.

DESIGN AN INTERIOR SPACE FOR A LIBRARY

A library is a curated collection of sources of information and similar resources, selected by experts and made accessible to a defined community for reference or borrowing. The authorities of the Manipal School of Architecture & Planning are planning to renovate their existing library space.

The library must meet the required standards and must comply to all the needs of an efficiently working library, wherein the anthropometric standards must be followed to obtain a clean layout with proper circulation spaces in between book racks and around the student reading spaces.

PLACES TO BE INSTALLED

- a) Bookshelves (min 40% of the total area)
- b) Individual study
- c) Librarian seating area
- d) Borrowing and Return section
- e) Storage area for library records
- f) Specify if any other space is essential

NOTE:

- 1) Use freehand sketches to explain the design scheme.
- 2) State your assumptions if any w.r.t **Project Brief**.

DELIVERABLES**1. DAY – 1 Submission****Concept Development**

- i) Project Brief
- ii) Related to function, form, design philosophy, technologies, material specifications, themes, character, heritage, culture, local influences, details, aesthetics, etc. with a reason for design decisions.
- iii) Sketches showing the initial design ideas based on concept. (min 2 options)
- iv) Concept development sketches.

(10 marks)

2. FINAL SUBMISSION AT THE END OF DAY 3**2A. Design Development:**

- i) Anthropometric data and its relation to the design requirements.
- ii) Other relevant data (eg. Lighting, storage, ventilation, etc)
- iii) Conceptual design drawings.
- iv) Finalization of design with reason and design decision.
- v) Refinement of final drawing.

(5 marks)

DESIGN SCHEME:**2B. Detailed Plan:**

- i) Floor plan with furniture layout and dimensions.
- ii) Ceiling Plan with dimensions and details.

(10 marks)

2C. Sectional Elevations

Note: Showing maximum details

(10 marks)

2D. Details of services provided:

- i) Lighting with detail explanation
- ii) Specify if any other service is provided

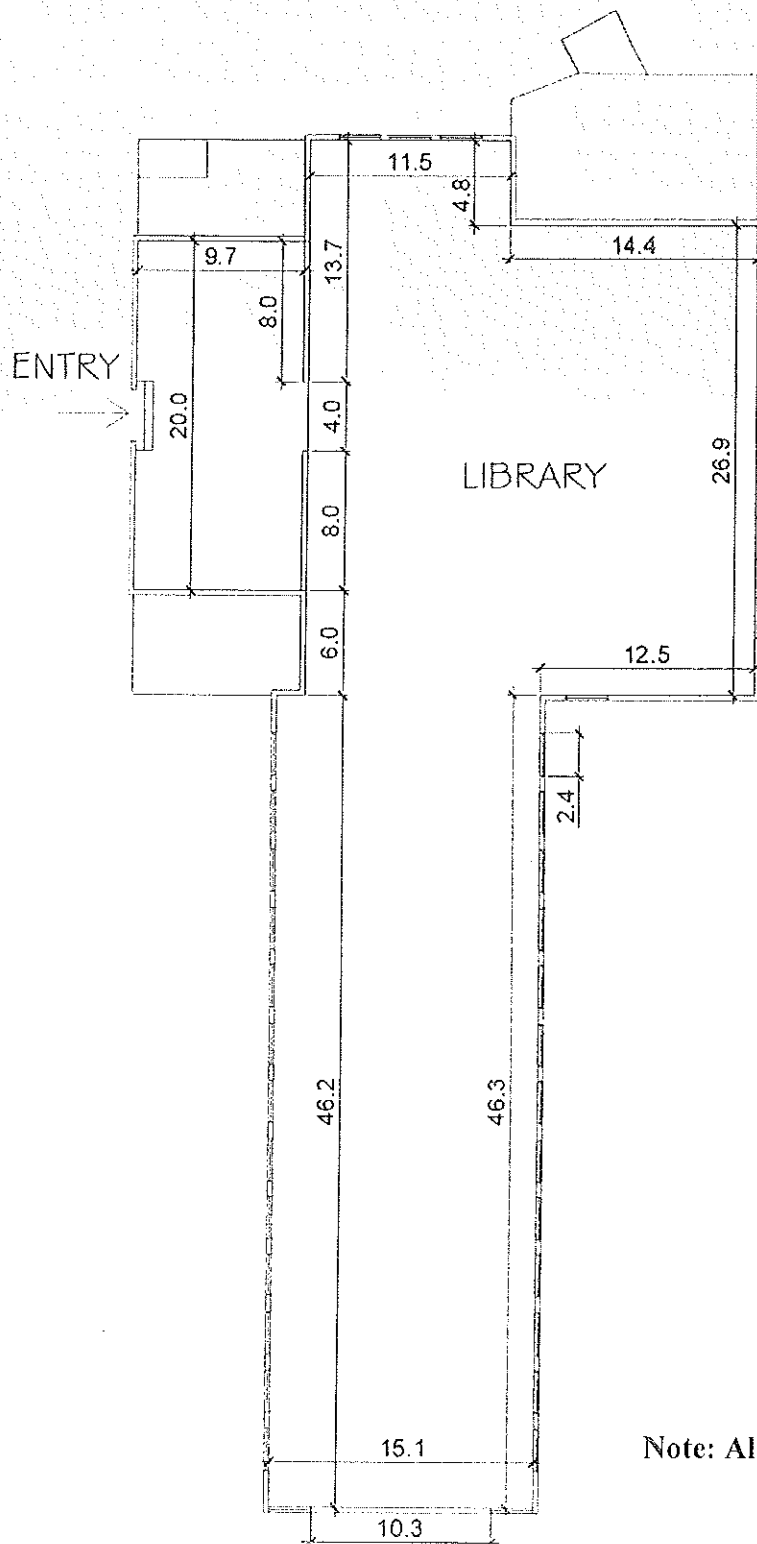
(5 marks)

2E. Any one furniture with details and specifications

(5 marks)

2F. Perspective covering the majority of the interiors (Minimum 1 views)

(5 marks)



Ceiling Level: 4m
 Lintel Level: 2.4m
 Sill Level: 0.9m

Note: All measurements are in meters



